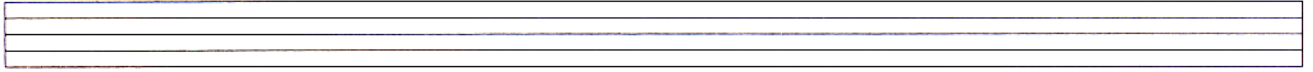


# CHAPTER ONE

## Theory and Terms: The Staff and Clefs

Figure 1-1 shows the staff on which notes are written to communicate the composer's musical ideas. Notice that it has five lines and four spaces between the lines.

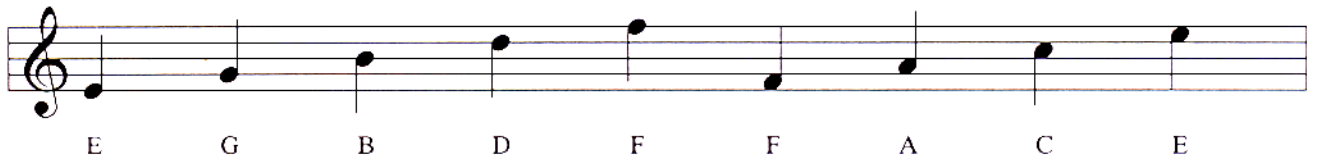
1-1



This staff can be used for instruments and voices of different ranges. However, a staff for a high instrument will use one set of notes, while a staff for a low instrument will use another. How do we know which set of notes to use? The clef tells us.

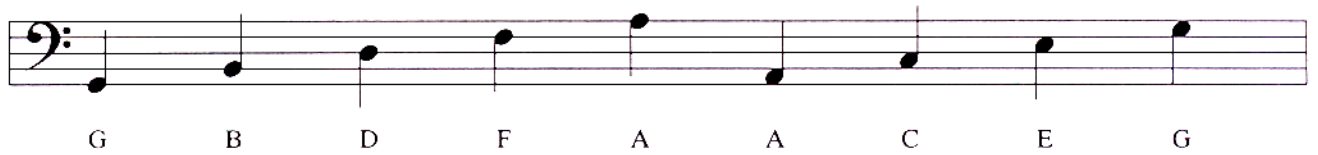
The two most commonly used clefs are the treble clef and the bass clef. When the staff contains a treble clef, we use the following notes above middle C on the piano (that is, the C that is right in the middle of the keyboard): E-G-B-D-F for the lines (starting on the bottom line), and F-A-C-E for the spaces in between them.

1-2



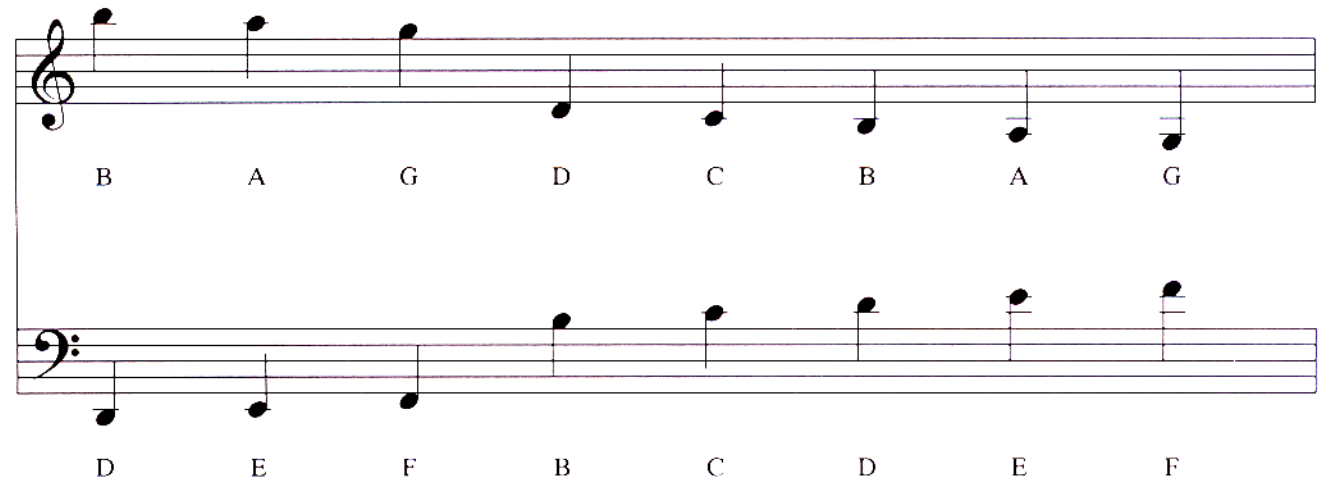
Singers use this clef and the set of notes it designates almost exclusively. Lower voices, instruments and the left hand on the piano will often use the bass clef, which designates the following notes below middle C: G-B-D-F-A for the lines (starting from the bottom line) and A-C-E-G for the spaces.

1-3



In addition, notes can go higher or lower than the staff. To write these notes, we use ledger lines (small lines above or below the staff), and continue up or down the alphabet in order.

1-4



Notice that the ledger line below the treble clef staff (i.e. middle C) is the same as the ledger line above the bass clef staff.