

PLL REMEMBER APRIL

(c) 1941, 1942 (Renewed) PIC CORPORATION and UNIVERSAL MUSIC CORP.
This arrangement (c) _____ PIC CORPORATION and UNIVERSAL MUSIC CORP.
All Rights Reserved

VOCAL

FOUR FRESHMEN

RUBATO

THIS LOVE- LY DAY WILL ENTHRONE IN TO EYE- NING

WE'LL SIGN GOOD BYE TO ALL WE'VE EV- ER HAD - EV- ER HAD

9 LONE WHERE WE HAVE WALKED TO GE- THER I'LL RE-

MEM- BER A- PRIL AND BE GLAD I'LL

TEMPO

17

BE CON-TENT YOU LOVED ME ONCE IN A-PRIL YOUR

LIPS WERE WARM AND LOVE AND SPRING WERE NEW BUT I'M NOT A

25

FEAR OF AU-TUMN AND HER SOR-ROR I'LL RE-

MEM-BER A-PRIL AND YOU A-PRIL AND YOU

I'LL REMEMBER APRIL

(c) 1941, 1942 (Renewed) PIC CORPORATION and UNIVERSAL MUSIC CORP.
This arrangement (c) _____ PIC CORPORATION and UNIVERSAL MUSIC CORP.
All Rights Reserved

PIANO

FOUR FRESHMEN

8

(RUBATO)

9 D ϕ 7 G ϕ D ϕ E ϕ 7 A ϕ A ϕ (b9)

C ϕ Dm ϕ G C ϕ 9 C ϕ

13

17 Fm ϕ B ϕ 7 E ϕ b7 E ϕ b6

Fm ϕ B ϕ 7 E ϕ b7 E ϕ b6

21

25 Dm ϕ G ϕ C ϕ 9

Bm ϕ E ϕ 7 E ϕ (b9) A ϕ F ϕ #7 Dm ϕ G ϕ (b9)

29

33 C ϕ 7 F ϕ 13 C ϕ 7

I'LL REMEMBER APRIL

(c) 1941, 1942 (Renewed) PIC CORPORATION and UNIVERSAL MUSIC CORP.
This arrangement (c) _____ PIC CORPORATION and UNIVERSAL MUSIC CORP.
All Rights Reserved

BASS

FOUR FRESHMEN

Handwritten bass line for the song "I'll Remember April". The piece is in 4/4 time and features a key signature of one sharp (F#). The notation includes a treble clef, a key signature of one sharp, and a 4/4 time signature. The melody is written on a single staff with a treble clef. The bass line is written on a single staff with a bass clef. The bass line consists of several measures, each containing a chord symbol. The chords are: D7, G7, D7, E7, A7, A7(b9), C#7, Dm7, G, C#7, C6, Fm7, Bb7, Eb7, Eb6, Fm7, Bb7, Eb7, Eb6, Dm7, G7, C6/9, Bm7, E7, E7(b9), A7, F#7, Dm7, G7, C#7, F#7, C#7.

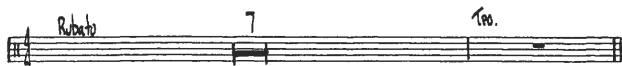
9 D7 G7 D7 E7 A7 A7(b9)
C#7 Dm7 G C#7 C6
13
17 Fm7 Bb7 Eb7 Eb6
Fm7 Bb7 Eb7 Eb6
21
25 Dm7 G7 C6/9
Bm7 E7 E7(b9) A7 F#7 Dm7 G7
29
33 C#7 F#7 C#7

I'LL REMEMBER APRIL

(c) 1941, 1942 (Renewed) PIC CORPORATION and UNIVERSAL MUSIC CORP.
This arrangement (c) _____ PIC CORPORATION and UNIVERSAL MUSIC CORP.
All Rights Reserved

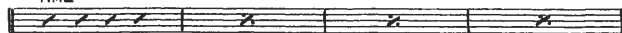
DRUMS

FOUR FRESHMEN



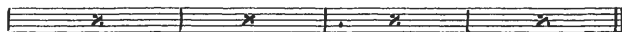
9

TIME



13

17



21

25



29

33

