

# PIANO

ARR. BY KEN ALBERS

## "THE FRESHMAN YEAR"

INTRO:

Musical notation for the introduction, consisting of two staves (treble and bass clef) in 4/4 time. The key signature has two flats (Bb and Eb). The melody is simple, with notes on the treble staff and bass staff. The piece is marked with 'Rit.....' (ritardando) and 'ACCELL.....' (accelerando).

A TEMPO

Musical notation for the first system of the main piece, consisting of two staves. The top staff shows chords: Bb, Eb9, Bb, and Ab9. The bottom staff shows the corresponding melody.

Musical notation for the second system of the main piece, consisting of two staves. The top staff shows chords: Dm9, G7(-9), Cm7, Cm7(b9), F7(b9), Bb, G7, Cm7, and F13. The bottom staff shows the corresponding melody.

Musical notation for the third system of the main piece, consisting of two staves. The top staff shows chords: Bb, Eb9, Bb, and Ab9. The bottom staff shows the corresponding melody.

# BASS

ARR. BY KEN ALBERS

## "THE FRESHMAN YEAR"

(INTRO:)

Tempo  $Bb$   $E^b9$  Rit. ...  $Bb$  Accell. ....  $A^b9$

$Dm^9$   $G^7(b9)$   $Cm^7$   $Cm^7(b9)$   $F^7(b9)$   $Bb$   $G^7$   $Cm^7$   $F^13$

$Bb$   $E^b9$   $Bb$   $A^b9$

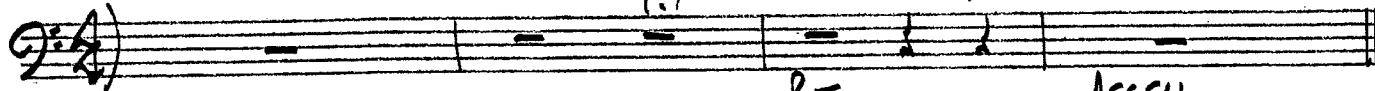
# DRUMS

ARR. BY KEN ALBERS

## "THE FRESHMAN YEAR"

BALLAD

INTRO:



Rit. ....

ACCELL. ....

Tempo

