

" LOVE LOST "

FROM "LOVE LOST" CAPITOL RECORDS ALBUM No. T-1189
EXACT-COPY RECORDING ARRANGEMENT OF
THE FOUR FRESHMEN

LYRIC BY
BOB FLANIGAN AND ROSS BARBOUR

MUSIC BY
DON BARBOUR AND KEN ALBERS

ARRANGEMENT BY
KEN ALBERS

Chords: Bbmaj7, Bb6, Bm7(b9), B2m, Cm7, F7(b9), F#m7, Bbmaj7, Bb6

LOVE — LOST — RIGHT IN THE VER - Y BE - GIN - NING —

LOVE — LOST — RIGHT IN THE VER - Y BE - GIN - NING —

Chords: Bb, Dm7(b9)?, Eb, E7(b9), A, -

LOVE — LOST WHEN IT HAD SUCH A GOOD CHANCE OF WIN - NING

LOVE — LOST WHEN IT HAD SUCH A GOOD CHANCE OF WIN - NING —

2.

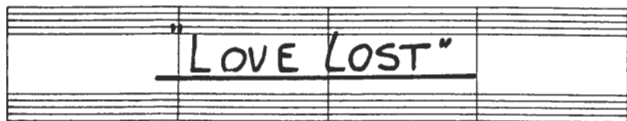
This system contains the first two lines of music. The top line is the vocal melody in treble clef, and the bottom line is the piano accompaniment in bass clef. The lyrics are: "I PLAYED THE GAME OF LOVE WITH MY HEART I WAS FAIR AND I'M SURE I WAS TRUE". Above the staff, the chords are labeled as Dm7(b9), G7, and Cm7. The music features eighth and sixteenth notes with triplet markings.

This system contains the next two lines of music. The lyrics are: "YOU DID-N'T CARE AND WE DRIFTED A-PART IT WAS ON-LY A GAME TO". Above the staff, the chords are labeled as Ebm7, Ab9, Ebm7, Ab7(b9), Gm7, and C9. The piano accompaniment continues with similar rhythmic patterns and triplet markings.

This system contains the final two lines of music. The lyrics are: "YOU SO LOVE LOST I GUESS I WAS TAK-ING MY CHAN-CES". Above the staff, the chords are labeled as Cm7sus4, F7(b9), Ebm7, Eb6, Bbm7(b9), Cm7, F7(b9), and F7(b9)Eb7(b9). The piano accompaniment concludes with a final chord and a whole note.

PIANO

ARR. BY KEN ALBERS



Handwritten musical notation for the first system. The top staff contains a treble clef and a key signature of two flats. The bottom staff contains a bass clef. The music consists of a series of eighth notes. Chord symbols are written above the notes.

Chord symbols: B^b7 B^b6 $Bm^7(b9)$ B^o Cm^7 $F^7(b9)$ F^{2+6} B^b9 B^b6

Handwritten musical notation for the second system. The top staff contains a treble clef and a key signature of two flats. The bottom staff contains a bass clef. The music consists of a series of eighth notes. Chord symbols are written above the notes.

Chord symbols: B^b $Dm^7(b9)G^7$ E^b $E_m^7(b9)$ A

Handwritten musical notation for the third system. The top staff contains a treble clef and a key signature of two flats. The bottom staff contains a bass clef. The music consists of a series of eighth notes. Chord symbols are written above the notes.

Chord symbols: $Dm^7(b9)$ G^7 Cm^7 $r.$

Handwritten musical notation for the fourth system. The top staff contains a treble clef and a key signature of two flats. The bottom staff contains a bass clef. The music consists of a series of eighth notes. Chord symbols are written above the notes.

Chord symbols: $E^b_m^7$ A^b9 $E^b_m^7$ $A^b7(\#11)$ G_m^7 C^9 Cm^7 $F^7(b9)$

BASS

ARR. BY KEN ALBERS

"LOVE LOST"

Handwritten bass line for "Love Lost" in 4/4 time. The piece is written in a key with one flat (B-flat) and a common time signature. The bass line consists of eight staves of music, each with a corresponding chord progression written above it.

Chord Progressions:

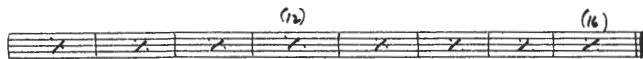
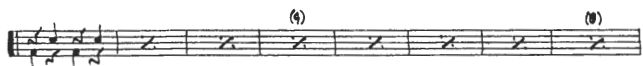
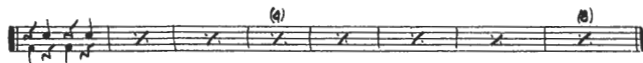
- Staff 1: $Bb7$ $Bb6$ $Bm7(w)$ B° $Cm7$ $F7(b9)$ $F7\#5$ $Bb7$ $Bb6$
- Staff 2: Bb $Dm7(w) G7$ Eb $Em7(w)$ A
- Staff 3: $Dm7(w)$ $G7$ $Cm7$ $Cm7$
- Staff 4: $Ebm7$ A° $Ebm7$ $A^{\circ}(\#2)$ $Gm7$ $C9$ $Cm7$ $F7(\#5)$
- Staff 5: $Bb7$ $Bb6$ $Bm7(w)$ B° $Cm7$ $F7(w)$ $F7\#5$ $Bb7$ $Bb6$
- Staff 6: Bb $Dm7(w) G7$ Eb $Em7(w)$ $A7$ $E^{\circ}(\#2)$
- Staff 7: $Dm7(w)$ $Dm7(w)$ $Fm7$ $G7$ $Eb7$ $Eb6$ A°
- Staff 8: Bb B° $Cm7$ $F7(b9)$ Bb Bb

DRUMS

ARR. BY KEN ALBERS

"LOVE LOST"

SLOW BALLAD



IN SPRAUN GUSTO:

